

## ILO Unemployment

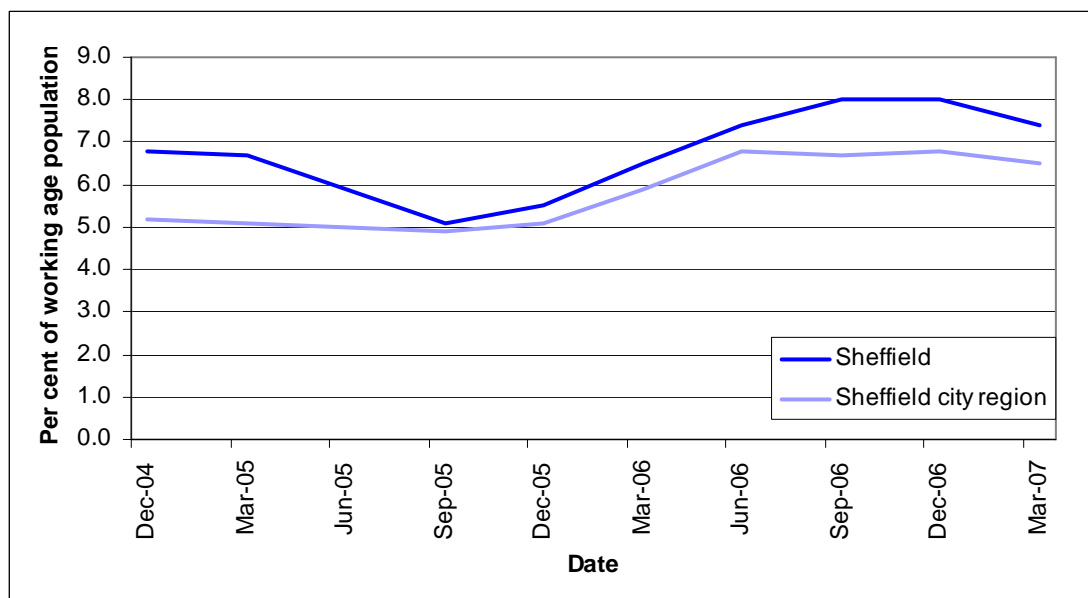
Official unemployment statistics are based on the internationally agreed ILO definition of unemployment which measures the jobless people who want to work, are available to work, and are actively seeking employment.

### Current unemployment levels (March 07)

Location	Persons	Rate
Sheffield	17,600	7.4
Sheffield city region	51,700	6.5

Source: National Statistics Annual Population Survey

### Quarterly unemployment rate trends



Source: National Statistics Annual Population Survey

### Note

All figures for working age population, calculated over four quarter averages

First Floor  
1 St James Row  
Sheffield S1 2EU

T +44 (0)114 223 2345  
F +44 (0)114 223 2346

[info@creativesheffield.co.uk](mailto:info@creativesheffield.co.uk)  
[www.creativesheffield.co.uk](http://www.creativesheffield.co.uk)

Registered in England  
No 5247948

Creative Sheffield Limited – Registered Office: Town Hall, Pinstone Street, Sheffield S1 2HH

Creative Sheffield Limited is a company limited by guarantee, and a company controlled by Sheffield City Council for the purpose of Part V of the Local Government and Housing Act 1989

## Quarterly unemployment trends (December 2004 – March 2007)

Year	Quarter	Sheffield		Sheffield city region	
		Persons	Per cent	Persons	Per cent
2004	Dec	15,900	6.8	40,800	5.2
2005	Mar	16,100	6.7	40,600	5.1
	Sep	12,400	5.1	39,100	4.9
	Dec	13,300	5.5	41,100	5.1
2006	Mar	15,600	6.5	47,500	5.9
	Jun	17,800	7.4	54,300	6.8
	Sep	19,100	8.0	53,400	6.7
	Dec	19,000	8.0	54,300	6.8
2007	Mar	17,600	7.4	51,700	6.5

Source: National Statistics Annual Population Survey

First Floor  
1 St James Row  
Sheffield S1 2EU

T +44 (0)114 223 2345  
F +44 (0)114 223 2346

[info@creativesheffield.co.uk](mailto:info@creativesheffield.co.uk)  
[www.creativesheffield.co.uk](http://www.creativesheffield.co.uk)

Registered in England  
No 5247948

Creative Sheffield Limited – Registered Office: Town Hall, Pinstone Street, Sheffield S1 2HH

Creative Sheffield Limited is a company limited by guarantee, and a company controlled by Sheffield City Council for the purpose of Part V of the Local Government and Housing Act 1989